

# Quick Connection Device for Electricity Meter Test EH20

## EH20 Quick Connection Device

- Fast and easy mounting and connecting of electricity meters
- Flexible single and three phase contact pin configurations
- Possibility to connecting of safety cables and current cables up to 120A
- Spring contact pins with current up to 100A
- Light weight
- Smart design

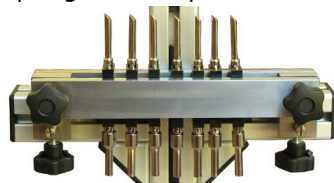
The EH20 Quick Connection Device is used together with electricity meter test system, and is especially recommended, when saving time is important. This device enables electricity meters to be mounted and connected rapidly for the purpose of their adjustment, test and verification.



Thanks to the smart design of the EH20 quick connection device, it may be used for the connection of practically all types of electricity meters with currents up to 100A.

The quick connection device is delivered complete as a ready for operation, and may be easily fixed to the ER20 aluminium suspension rack or multi-position testing stand of TB40 Test Bench, in exactly the same way as a meter is connected.

Spring contact pins of the EH20 are used to make connection to the meter and may be easily moved sideways and fixed in any desired position with distance between two adjacent contact pins from 14mm. It is also easy to remove and switch the pin positions for preparing the contact pin configuration to many different meter connection schemes including single and three phase meters.



Spring contact pins enables connecting:



safety voltage and current cables up to 20A with using M8-Ø4 adaptor,

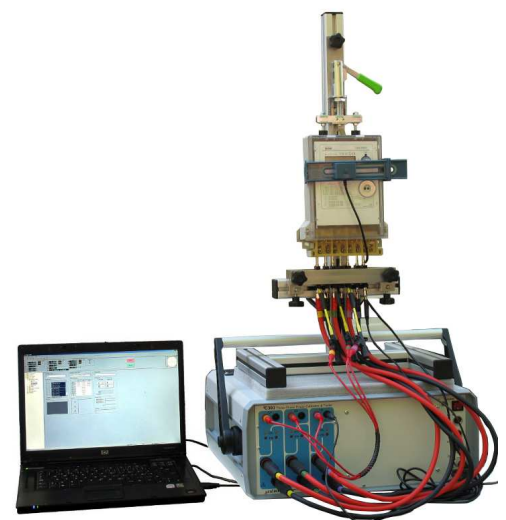


high current cables up to 120A,

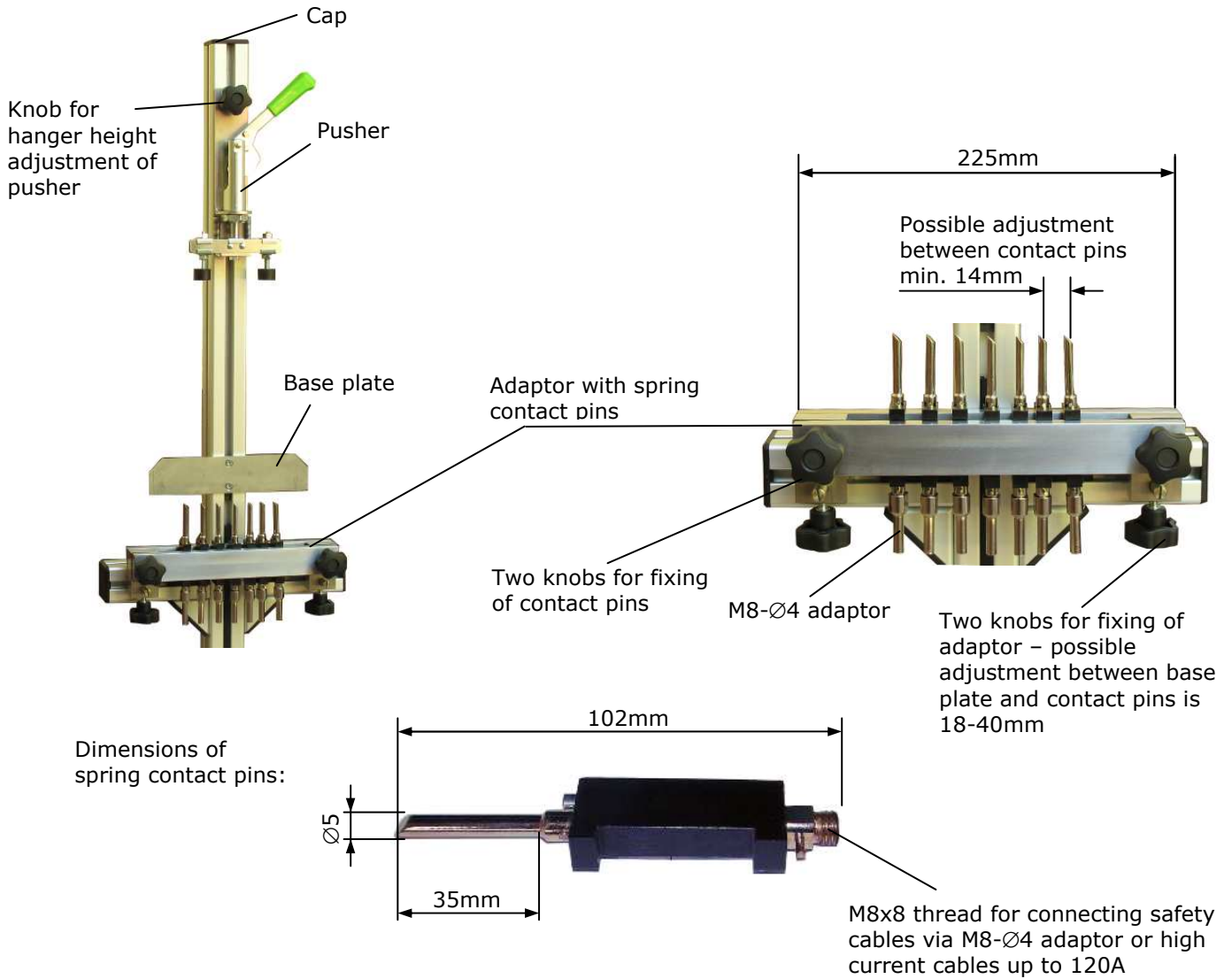


safety voltage cables in order to furnish phase voltages with using safety crocodile test clip.

The EH20 Quick Connection Device together with ER20 rack and C300 Power Calibrator allows the automatic or manual testing of a single phase and three phase electricity meters in 0.02 or 0.05 accuracy class up to 120A current range, without the need of an additional instruments and options - see as example TB10 three phase meter test station.



The EH20 is completely delivered as a ready to use and may be fixed to the ER20 rack as shown in the figures:



Continuous current: 100A

Maximum current: 120A 10min./1h

Pin resistance: 0.6mΩ@100A (resistance between M8 thread and terminal of meter including contact resistance)

Test voltage: 4000VAC / 50Hz / 1min.

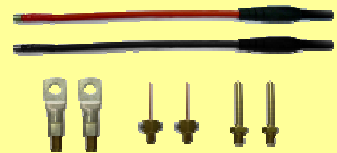
**EH20 Quick Connection Device's equipment**

**All completed EH20 QCD's set consists of:**

- Pusher set
- Base plate set,
- Adaptor set,
- Spring contact pin (7units),
- M8-Ø4 adaptor (7units),
- Safety crocodile test clip (3units),
- Warranty card.

**Optionally for EH20 QCD are available:**

- EA11 current cables up to 120A (2units) with set (6units) of replaceable terminals,
- set of safety voltage and current cables up to 20A (2units),



Calmet Ltd  
Kukulcza 18, 65-472 Zielona Gora, Poland  
Phone +48 68 324 04 56 Fax +48 68 324 04 57  
E-mail: mail@calmet.com.pl Web access: <http://www.calmet.com.pl>