

Calibrator for testing insulation resistance meters



The CR10 Calibrator is used for testing of analogue and digital insulation meters. CR10 reproduces resistance in range 10kΩ...10GΩ with resolution of 10kΩ (6 decades of setting resistance) at working voltages up to 2500V.

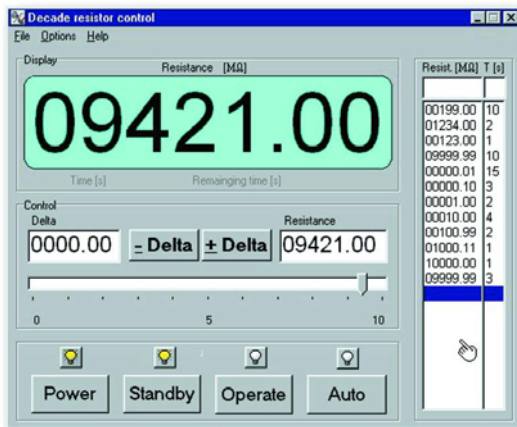
Resistance values are set from numerical keyboard and are displayed on 6 digit LED indicator in MΩ. For facility of instruments checking, user can increase or decrease the resistance with set-up deviation.

RS232C interface enables connecting calibrator to computers and implement it to automatic measurement system. In this aim the CR10 Calibrator is supplied with *Calpro CR10* software.

CR10

CR10 High Resistance Calibrator

- Setting resistance up to do 10.000,00 MΩ
- Working voltage up to 2500 V
- Programmable from keyboard and RS232C
- PC software *Calpro CR10*



Main features of *Calpro CR10* software are:

- remote control of the CR10 Calibrator: setting output resistance value, control switching "operate/standby" status, setting the deviation value in calibrator memory and multiple decrease or increase output resistance by set of deviation value,
- programming and edition up to 20th resistance values in the table and then manual or automatic generation with programmed time interval,
- customer data base of tested meters.

TECHNICAL PARAMETERS OF CR10 CALIBRATOR

Settings range	Resolution	Basic error	The biggest working voltage
0,01...0,10 MΩ	0,01 MΩ	0,05% of setting value	100 V
0,11...10,00 MΩ		0,1% of setting value	1000 V
10,01...1000,00 MΩ		0,3% of setting value	2500 V
1001...10000,00MΩ		0,5% of setting value	2500 V
Temperature coefficient of resistance in range +5...+40°C			0,005 %/°C @ R<100MΩ 0,03 %/°C @ R>100MΩ
Voltage coefficient of resistance			0,0006 %/V
Power supply			230V±10% / 45...65Hz / 30VA
Weight and dimensions			8kg i 371x150x342mm

calmet Ltd

Poland, 65-463 Zielona Góra, Fabryczna 23B, Tel. +48 68 324 04 56 Fax +48 68 324 04 57

e-mail: mail@calmet.com.pl

internet: <http://www.calmet.com.pl>

CR10 data sheet 2007-11