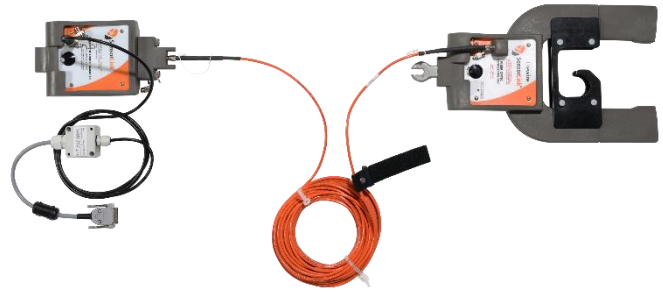


## High Voltage current sensor 2000A for analysers and testers

Calmet ALW2000AC	
•	Wide range of current measurement: 30A to 2000A
•	Fiber optic isolation up to <b>150kV</b>
•	9.84cm maximum conductor size
•	12m distance from sensor to meter
•	Exchangeability of sensors between devices with keeping accuracy
•	Works with TE30 and TS33 testers and analysers



Current sensor ALW2000AC (LiteWire) allows for easy current measurement on **High Voltage** cables and bars in electric installation. Due to wide jaws, it is easy to assembly it in hard access places. Maximum diameter of cable, on which we can assembly the sensor is about 9.84cm. The sensor enables measurements on primary side of high voltage installations.

### Technical specification

Parameter	Value
Range of current	30A – 2000A AC
Output voltage	1mV / 1A
Minimum load impedance	≥6kΩ
Accuracy	±1.5%
Frequency range	40Hz to 3kHz
Maximum voltage of cable / bar to earth	150kV
Length of fiber optic	12m
Temperature range operation / storage	-30°C to +60°C/-30°C to 60°C
Dimensions of clamp jaws	9.84cm
Weight	approx. 2.73kg
Battery	2 x 6F22 9V alkaline

### Warning!

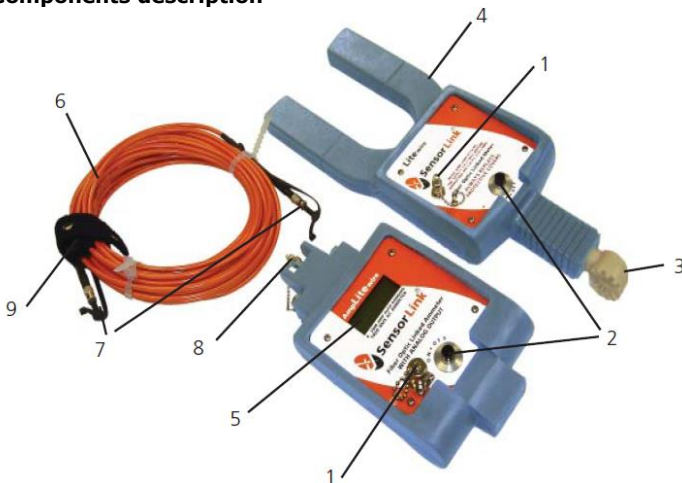
SAFETY INFORMATION



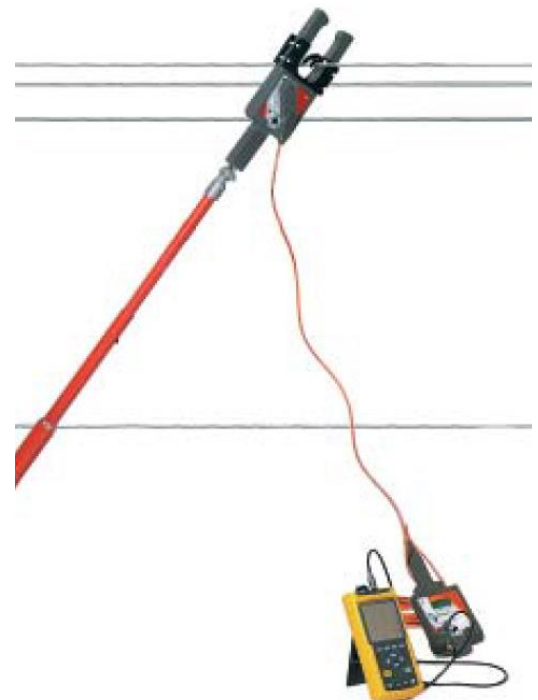
The LiteWire is designed for use when attached to a suitable universal hot stick. All precautions appropriate for the line voltage should be taken. The sensor unit of the LiteWire is not designed to be a high voltage insulator. The sensor should not bridge between conductors or between a conductor and ground. Be careful not to allow the universal chuck adaptor or the metal parts of the hot stick to bridge between high voltage and ground or between two high voltage points.

The fiber optic cable is a high voltage insulator and will isolate equipment and personnel in the same manner as a fiber glass hot stick. It should be maintained and tested in the same manner as the hot stick. Cleaning and inspection should be done in the same manner and schedule as hot sticks. Testing should be done in the same manner as hot stick tests. Length of cable between line and operator should follow the same rules as used for hot sticks.

### Components description



- 1- Fiber optic cable female socket;
- 2- ON/OFF switch;
- 3- Universal chuck adaptor for stick;
- 4- Sensor transmitter;
- 5- Digital display;
- 6- Fiber optic cable;
- 7- Fiber optic cable female socket;
- 8- BNC output;
- 9- Strain Relief with Velcro



Calmet Ltd  
 Kukulcza 18 Street, 65-472 Zielona Gora, Poland EU  
 Tel. +48 68 324 04 56 Fax +48 68 324 04 57  
 E-mail: mail@calmet.com.pl Internet: http://www.calmet.com.pl