

C300B 1-Phase 360A connection

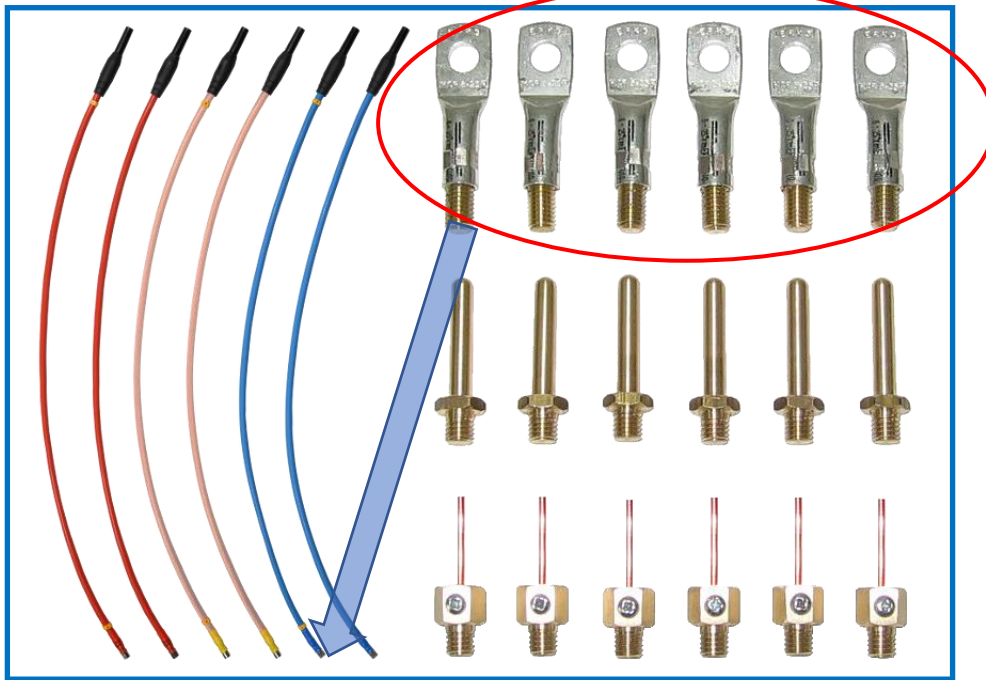
Application Note No16

The C300B Calibrator in a single-phase circuit enables the generation of current up to 360A.

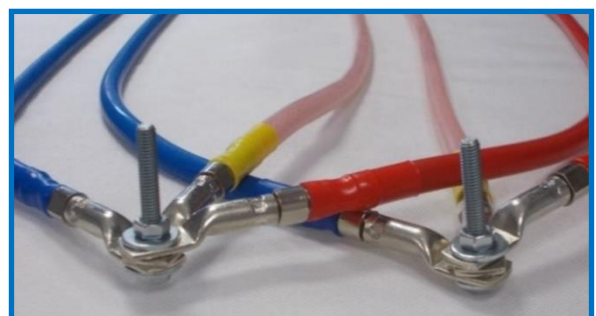
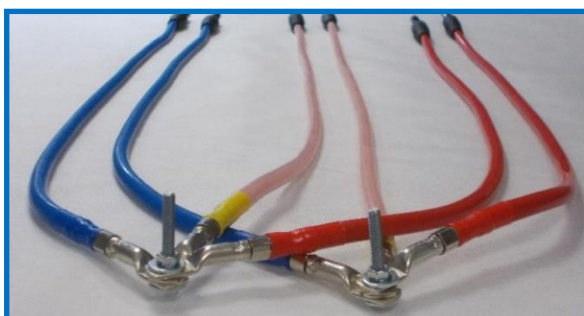
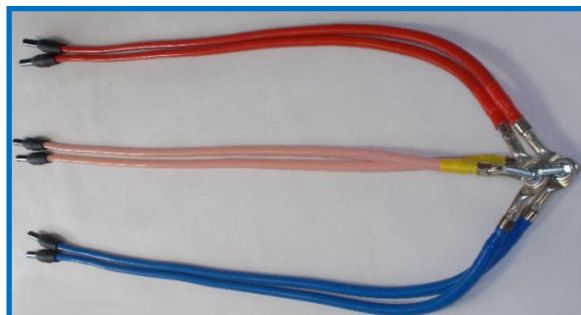
There is no need for additional equipment to achieve 360A single-phase connection. All that is needed is a set of EA30 current cables up to 120A and 2 screws with M8 nuts (8mm), preferably made from brass or steel.

The figures illustrate how to achieve a single-phase connection.

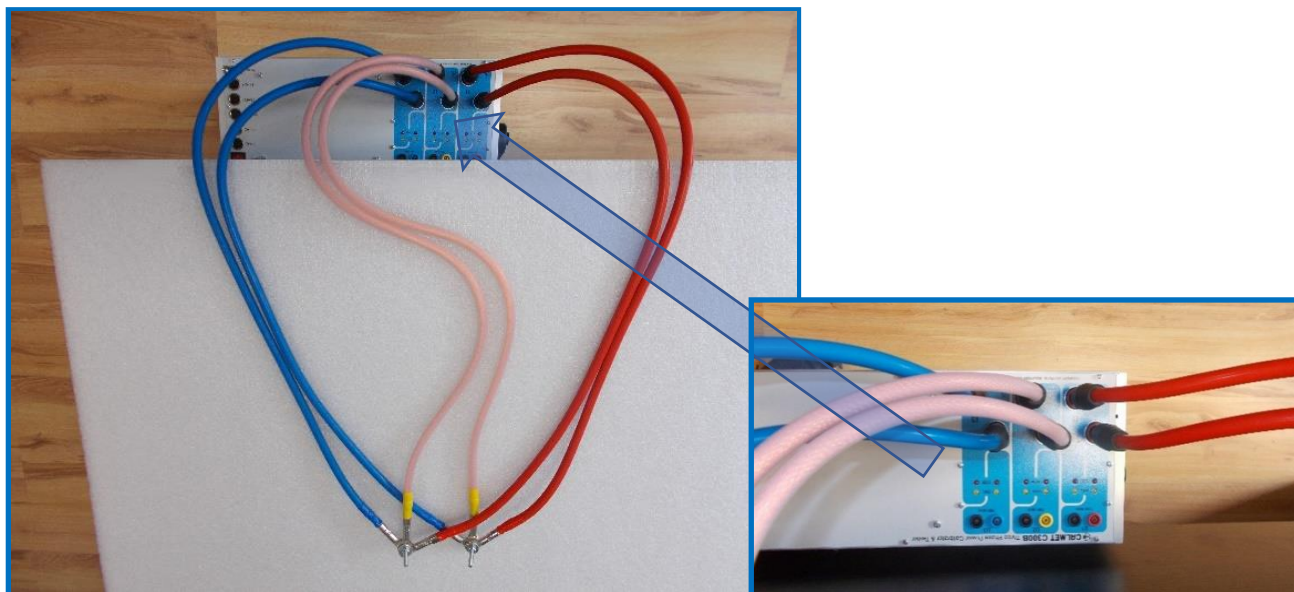
Full set of EA30 cables and terminals:



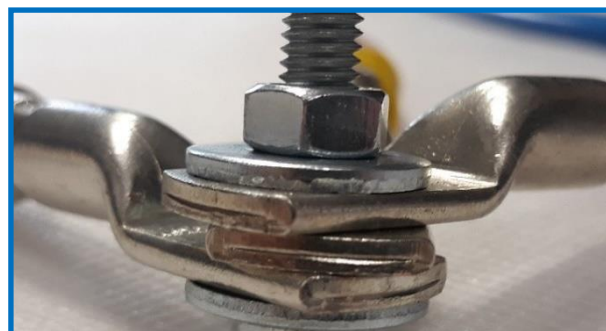
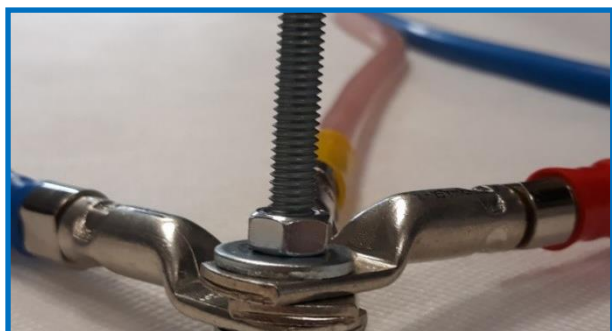
EA30 cables with terminals prepared for parallel connection:



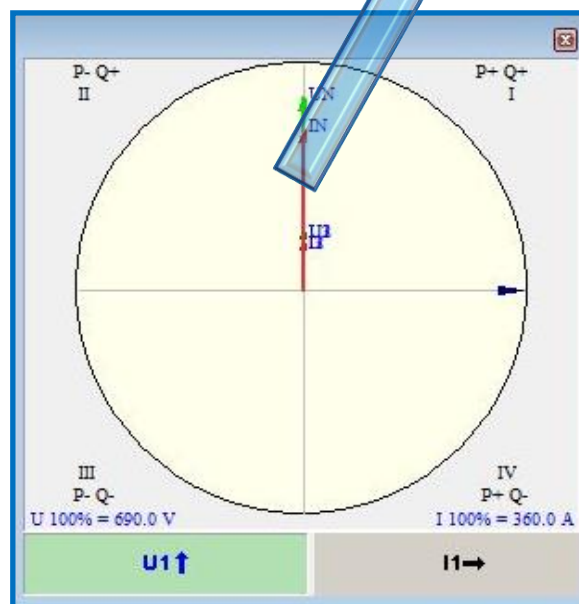
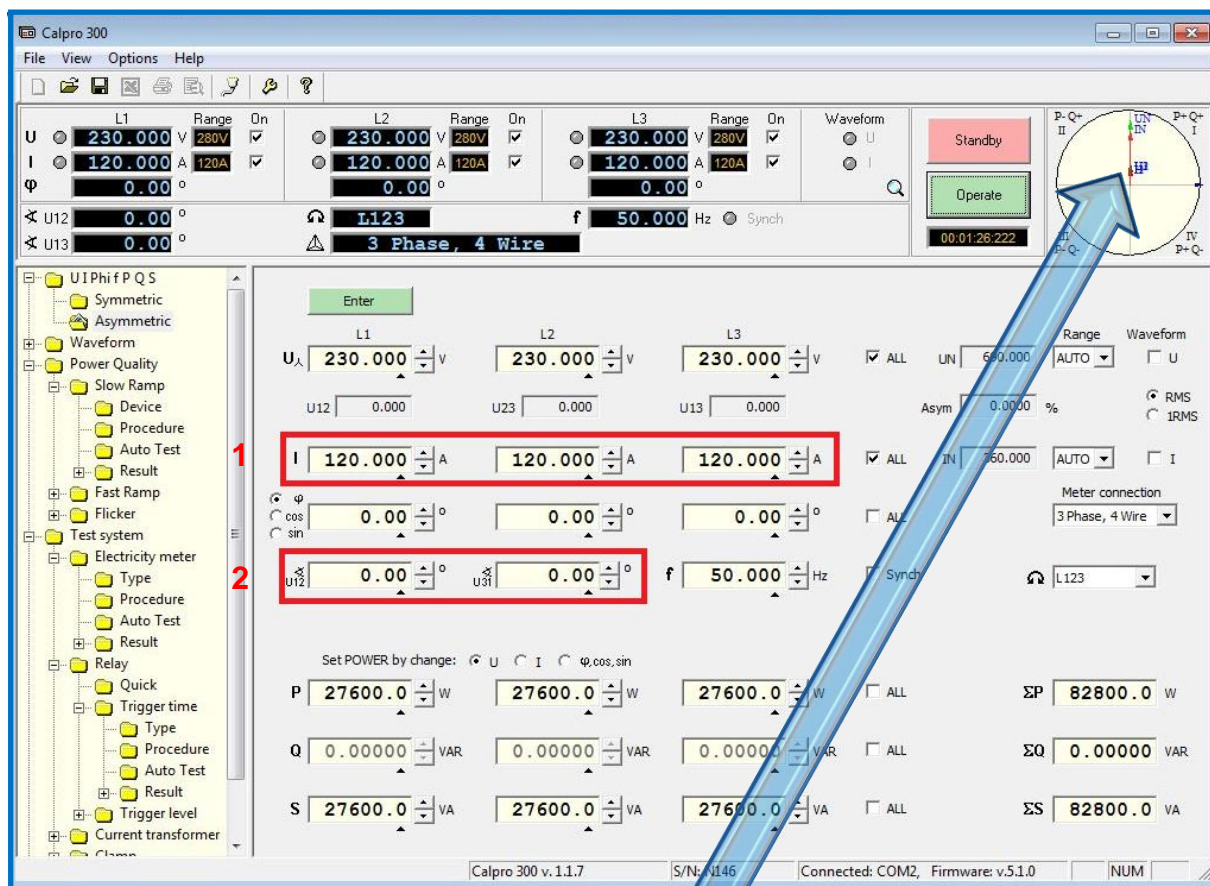
Connecting the EA30 cables to the C300B Calibrator:



The sequence of assembly: screw, washer, terminal, terminal, terminal (ring), washer, nut.



Please remember that in three-phase setting of the C300B (in Asymmetric mode), the current channels L2 and L3 must be set to the same values as in phase L1 (see field 1 below) and phase shifts between voltages have to be set to 0 (from 120 and 240 degrees – see field 2 below).



After performing the above mentioned steps, the parallel connection of C300B current outputs will be achieved and an output current of up to 360A will be generated.