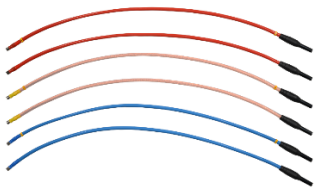


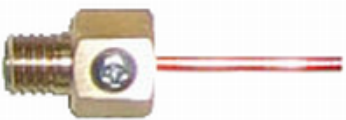


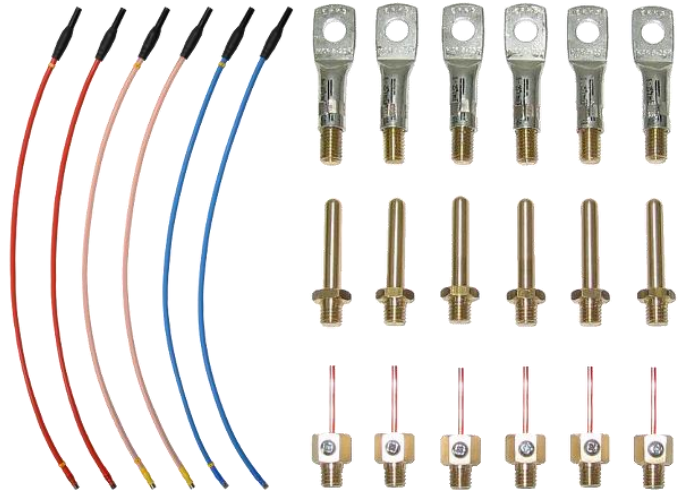
**120A cables with additional terminals**

| Calmet EA30                             |  |
|---|--|
| • Continuous 120A current               |  |
| • Easy change of terminals              |  |
| • 6mm straight brass pin                |  |
| • Copper wire up to $\Phi 2.5\text{mm}$ |  |
| • Ring tip for M8 screw                 |  |

EA30 - 120A cables and additional terminals are set of special, flexible high current cables with terminals for easy connection between calibrator or meter and device under test. The different terminals allow for easy and reliable connection.

**Accessory description**

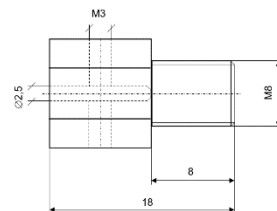
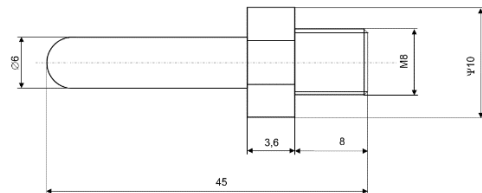
|  |   |
|--|---|
| 120A cables, cross section 25 mm <sup>2</sup> , length 1m<br>No. EA30-01 |    |
| Ring tip for M8 screw<br>No. EA30-02                                     |  |
| Straight brass pin $\Phi 6\text{mm}$<br>No. EA30-03                      |  |
| Copper wire up to $\Phi 2.5\text{mm}$ diameter<br>No. EA30-04            |  |



**EA30 set contents:**

- 1- 6 x 120A cables (No. EA30-01);
- 2- 6 x ring tip terminal (No. EA30-02);
- 3- 6 x brass pins (No. EA30-03);
- 4- 6 x copper wires (No. EA30-04);

**Terminals dimensions**



Calmet sp. z o.o.  
 Kukulcza 18 Street, 65-472 Zielona Gora, Poland  
 Tel. +48 68 324 04 56 Fax +48 68 324 04 57  
 E-mail: mail@calmet.com.pl Internet: http://www.calmet.com.pl